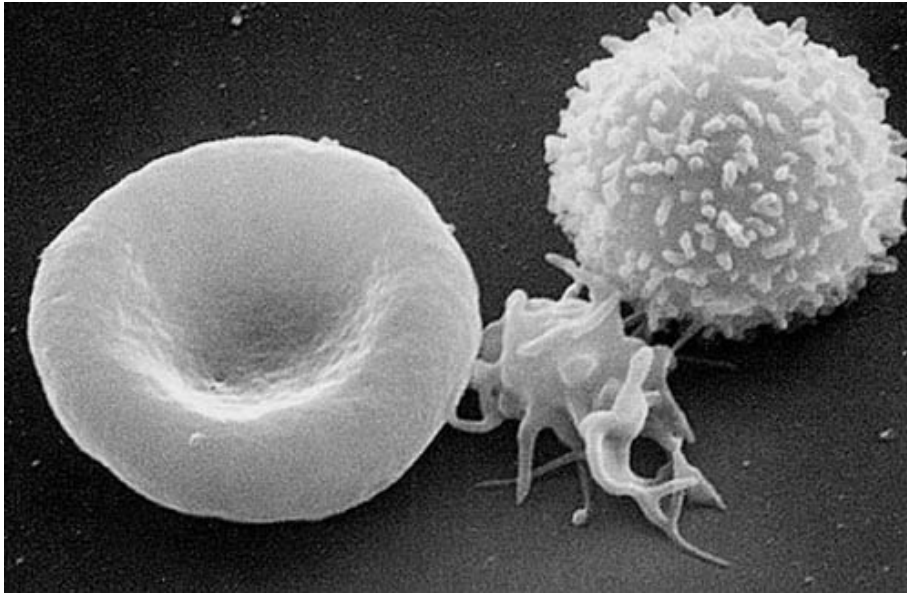
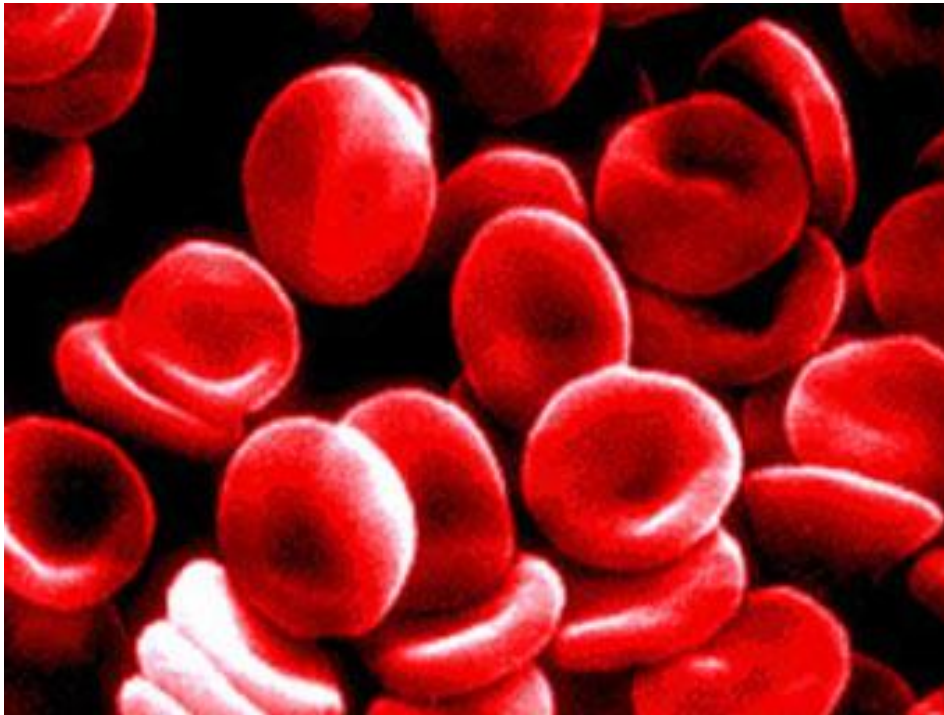


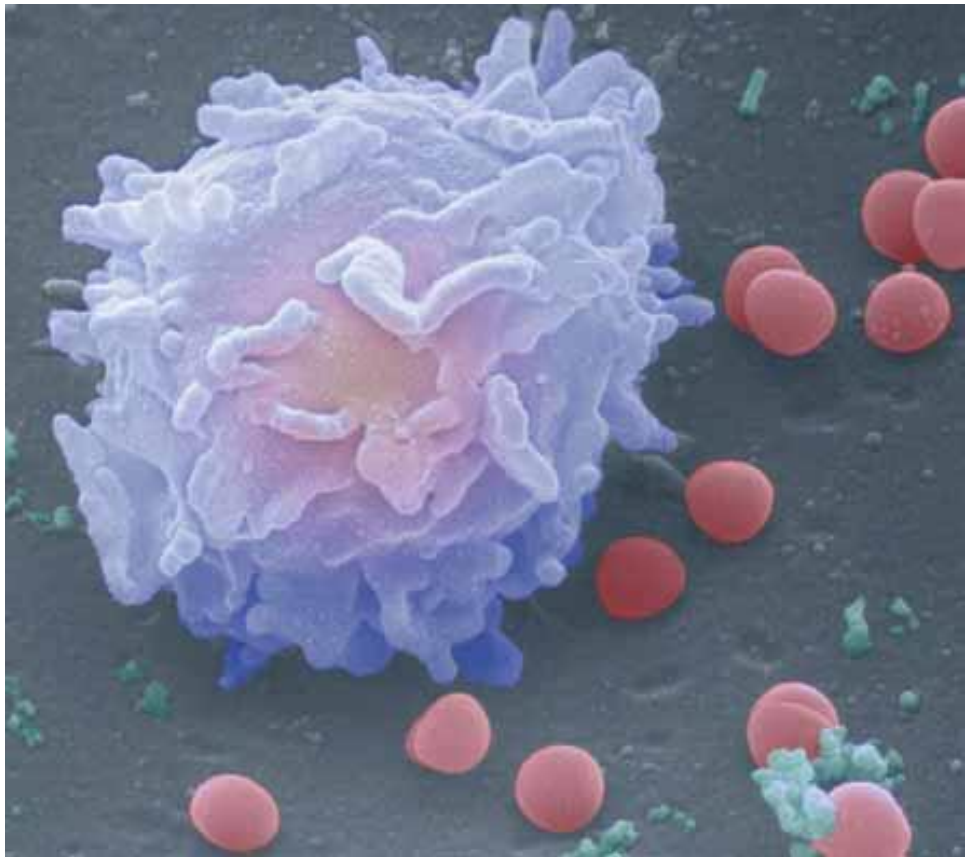
## Blood cells



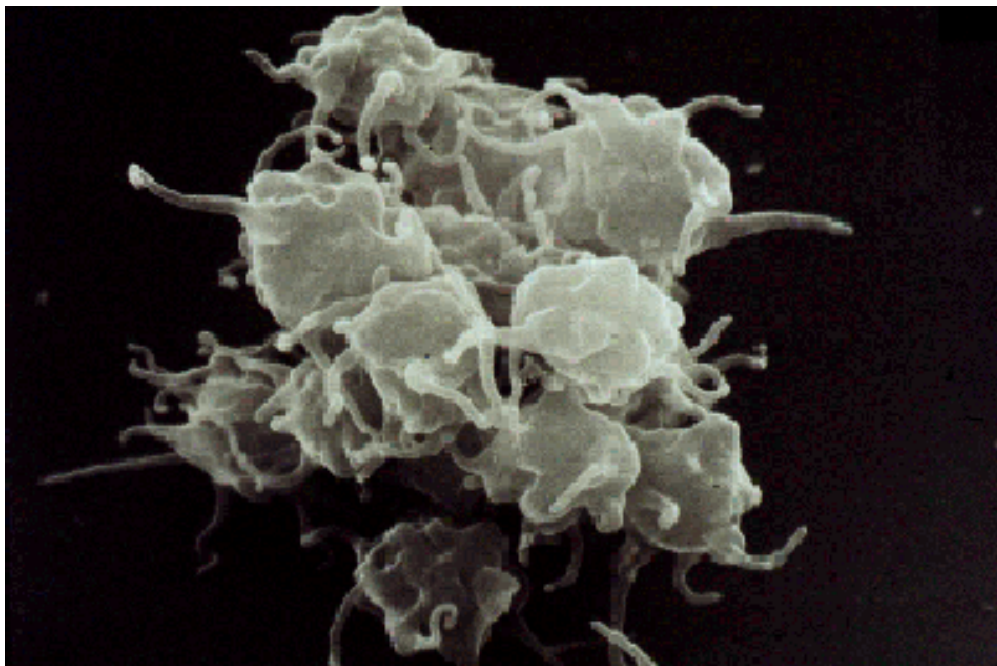
Red blood cell, platelet & white blood cell



Red blood cells



White blood cell attacking bacteria



Platelets

# Blood Vessels

There are 3 different types of blood vessels that carry blood around the body.

ARTERIES carry blood \_\_\_\_\_ from the heart to the body cells.

VEINS carry blood \_\_\_\_\_ the heart \_\_\_\_\_ the body cells.

CAPILLARIES are the \_\_\_\_\_ blood vessels and they connect the \_\_\_\_\_ to the \_\_\_\_\_. They have very thin walls (one cell thick) to allow oxygen and nutrients to \_\_\_\_\_ into and out of the \_\_\_\_\_.

to

pass

arteries

from

blood

tiniest

away

veins